

Isystick Wall Mount Basin Mixer 166mm Spout

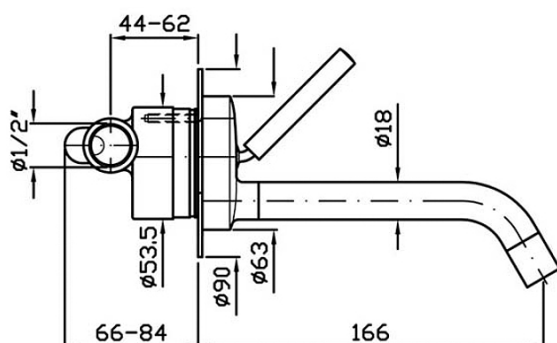
ZP1616+R99618

WELS: 6 stars

Litres/minute: 4.5L

WELS License/Reg. No: 0023 / T08780

Finishes available: Chrome, Brushed Nickel



The Isy wall mount basin mixer is part of a system that speaks the language of simplicity: it is not an effort of design but an idea which flows from water's own creativity and follows its plastic forms. Less is better, least is best: the utmost formal simplification for the first mixing tap in the world made with vanishing technology. Designed by Matteo Thun with Antonio Rodriguez.

This wall mounted basin mixer is crafted from solid brass. Spout projection of 166mm.

Important notice before installation:

This tapware is to be used with equal pressure hot and cold water. Pressure must be restricted to 500kpa maximum. In instances where the pressure is higher than 500kpa, pressure reduction valves must be installed.

WARRANTY
15 years

*Conditions apply.

streamline

Dimensions are in millimeters and are subject to manufacturing variations. Streamline reserves the right to vary specifications at any time without notice. Information provided within this specification sheet is correct at the date of printing. Please confirm all particulars with your sales consultant prior to purchase.
Version: 1.2 - May 2019