

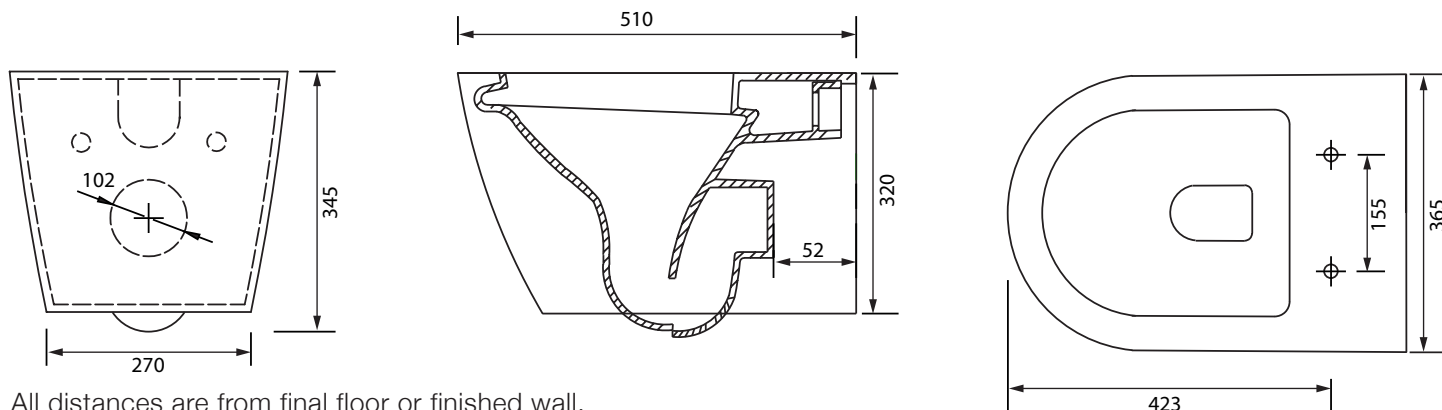
Installation Guide

ARCISAN

Synergii Wall Hung Pan

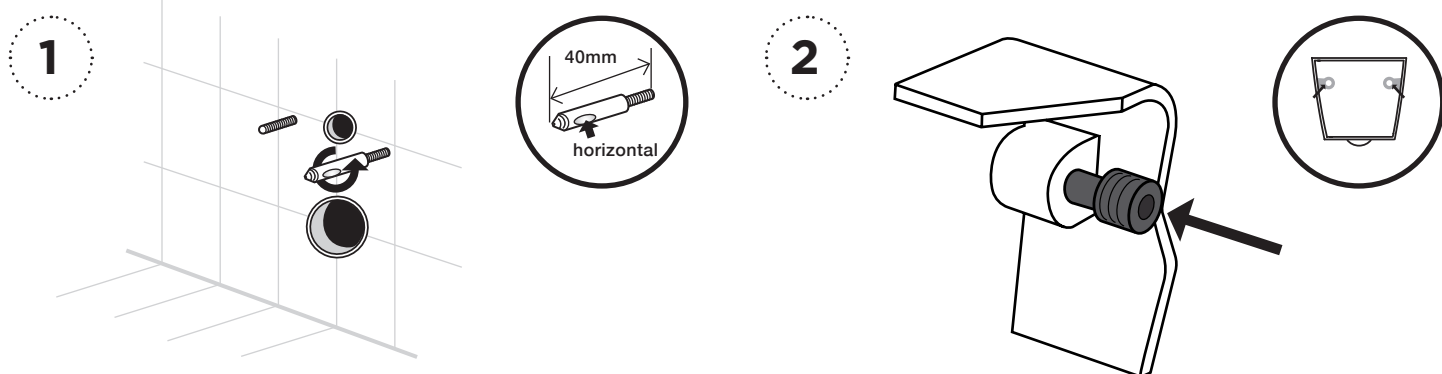
SY04331 (Slim Seat) and SY04341 (Standard Seat)

Please leave the instructions with the owner.



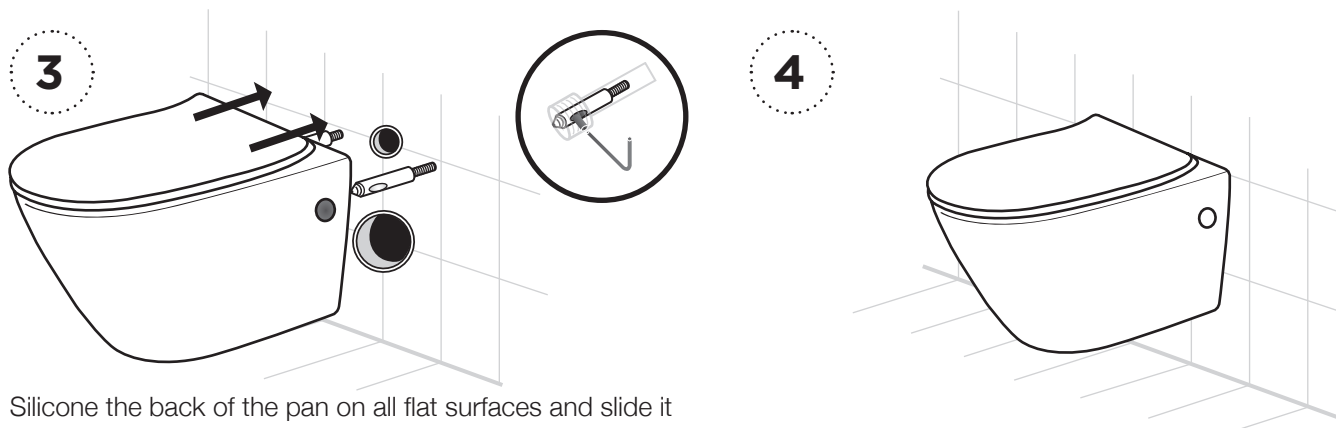
All distances are from final floor or finished wall.

This wall hung pan is designed to be used with the in-wall cistern and frame (AR04430).



Screw the threaded sockets onto the metal supports of the cistern frame until the entire length of the metal support **plus** the threaded sockets measures 40mm. Make sure the hollow indentation is facing outwards.

Slide the plastic black locking cap into the two holes within the pan so that the bigger end is towards the front of the pan and the hole for the grub screw is facing outwards.



Silicone the back of the pan on all flat surfaces and slide it onto the brackets, so it is pressed right up against the wall. Using an allen key, tighten the grub screws on both sides of the pan to lock it in place.

Pop the caps provided into the holes and silicone the gap between the wall and the pan.

streamline

www.streamlineproducts.com.au

This product installation must comply to AS/NZS 3500.

Dimensions are in millimeters and are subject to manufacturing variations. Streamline reserves the right to vary specifications at any time without notice. Information provided within this installation sheet is correct at the date of printing.
Version: 1.0 - March 2016

Technical and Service - Ph: 1300 735 352 | Email: support@streamlineproducts.com.au