

## WARRANTY

### Guarantee

Arcisan mixers are covered by a 15 year conditional residential warranty subject to the terms below.

- > 15 year cartridge replacement warranty against the ceramic disc cartridge leaking—parts only.
- > 7 year product or parts warranty against manufacturing defects. (Hoses and hand sprays on kitchen mixers are 2 years).
- > 1 year replacement product or parts and labour warranty.

Streamline reserves the right to assess, fix, replace or service warranty claims as they see fit. The warranty period applies from date of purchase or date of handover for new buildings. If this is not available, the manufacturing date stamp on the product will be used.

Warranty claims should first be directed through the point of purchase. It is mandatory that the purchaser provide proof of purchase and the warranty is valid for the original purchaser only and is not transferable.

### Exclusions

The warranty does not apply to the following cases:

- Blocked or damaged aerators are not covered under the warranty. Other damage caused by not flushing the system before connection or use.
- Damage caused by improper installation, abuse, accident and misuse. Also previous repair or alteration without the company's or agent's permission.
- Warranty only applies to items purchased through an authorised re-seller within Australia.
- Tapware used in a commercial setting. This is subject to a 1 year parts and labour warranty.
- General wear and tear from normal use of the product, including scratching from cleaning.
- Water temperature or pressure exceeds the stated maximums. The maximum water pressure is 500kpa and maximum temperature is 75 degrees Celsius.

### Consequential Damages

Streamline Products will not be liable for damage to other items (floor coverings, walls, lights and other fittings) or any other type of consequential losses caused by a defect in the product, except when the failure amounts to a major failure under your statutory rights.

### Statutory Rights

Our goods come with guarantees that cannot be excluded in the Australian Consumer Law. You are entitled to a replacement or refund for a major failure and for compensation for any other reasonably foreseeable loss or damage. You are also entitled to have the goods repaired or replaced if the goods fail to be of acceptable quality and the failure does not amount to a major failure.

### Contact

This warranty is provided by Streamline Products P/L

Phone: 1300 735 352

Email: [customerservice@streamlineproducts.com.au](mailto:customerservice@streamlineproducts.com.au)

# ARCISAN

## AXUS FREESTANDING BATH MIXER AX01340 | AX01345

## INSTALLATION AND CARE INSTRUCTIONS

### Important Information

- Hot and cold water inlet pressures should be equal.
- Operating static pressure is 150—500kpa. If pressure exceeds this, then an approved pressure limiting valve must be fitted.
- Pipework must be flushed out prior to installation of the mixer. Damage caused to the mixer by debris coming through the pipework is not covered under warranty.
- Installation should comply to AS/NZS3500.1 2003 or the relevant local requirements.
- Maximum hot water temperature is 75°C.
- Not suitable for gravity feed applications.

### Maintenance and care

- Using a soft cloth with a mild detergent or soap is all that is required to clean surfaces.
- Do not use abrasive cream cleaners or citrus based cleaning products. These will damage the surface.
- Aerator may be removed and cleaned should it become blocked.

# ARCISAN

# INSTALLATION

## Step 1

Drill Ø55mm hole into floor where mixer will be located.

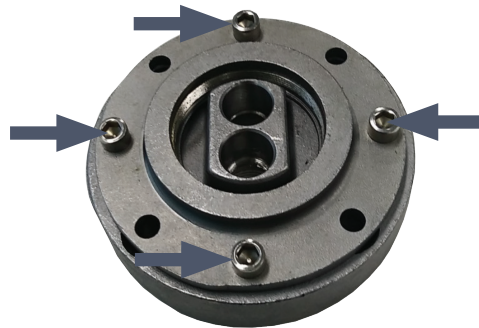


Bath edge

## Step 2

Remove the 4 screws holding the fixing plate to the base (as shown). These need to be kept, as they are needed when the mixer is installed.

Remove fixing plate.

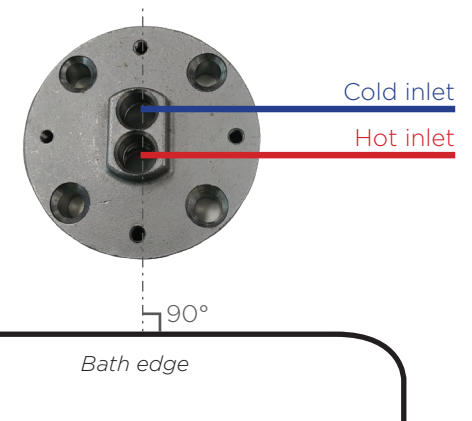
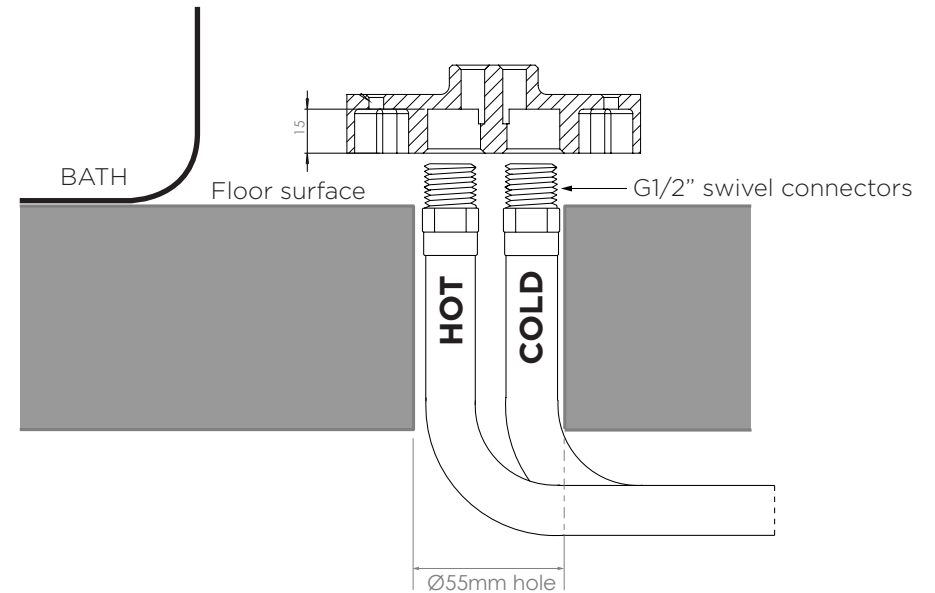


## Step 3

Connect the hot and cold inlet pipes to the base, ensuring the hot pipe is closest to the bath.

**NOTE:** Inlet pipes must be screwed to the bottom of the base using thread sealing liquid or paste (*Loctite 577* or similar). **Do not use Teflon tape.**

Push base into position. Flush against the floor.



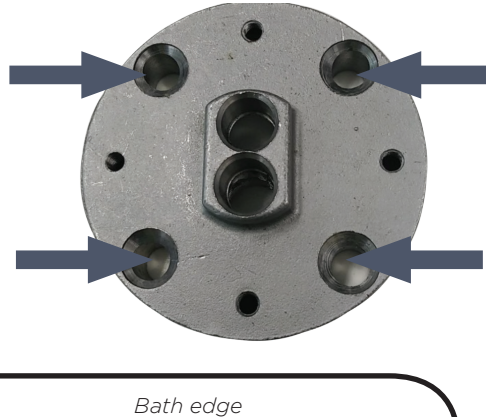
## INSTALLATION

### Step 4

Using the holes in the base as a guide, use a 3/16" drill bit to drill four holes at a minimum depth of 50mm.

Screw base to floor using supplied screws, ensuring base is level.

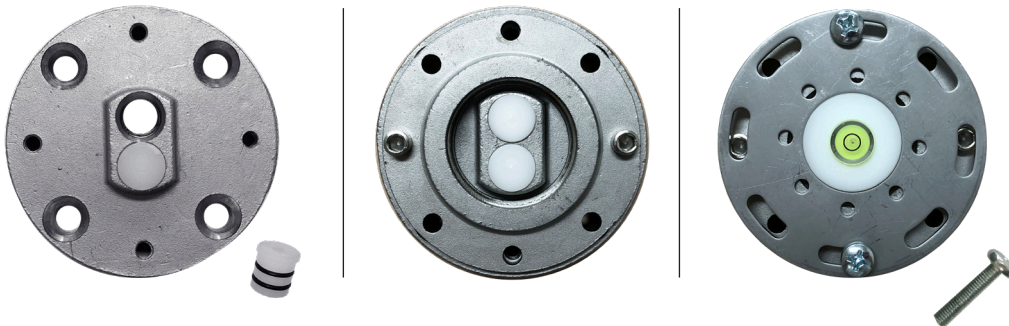
**NOTE:** Ensure holes are dust free when inserting screws. Blow dust off.



### Step 5

Insert the 2 white sealing plugs into holes in base. Attach fixing plate on top of base, using x2 screws only. Lining up so screw holes are aligned.

Position round plug securing plate onto base, screw down tightly (using screws supplied).

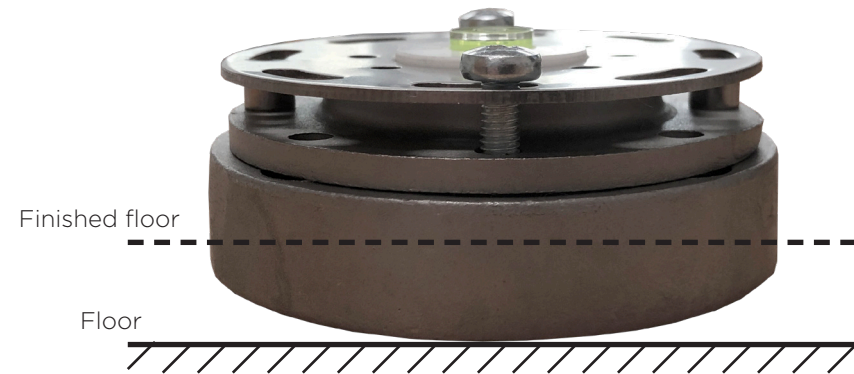


### Step 6

The base is designed to sit flat on the floor, providing the distance between the finished floor height and floor is at least 12mm.

If this is less than 12mm the base cover will not fully cover the body and the base will need to be fitted below the floor level.

Tile around base. Tiling must be to within 5mm of the entire circumference of the base.



# INSTALLATION

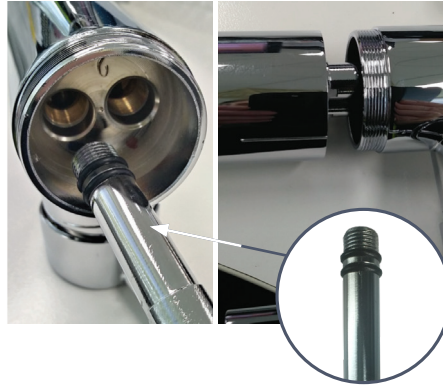
## FIT OFF

### Step 7

Screw the hot and cold pipes into the bottom of the mixer.

**NOTE:** Make sure the o-ring is a tight fit and is not damaged. If damaged, replace the o-ring with spares provided.

Slide the outer column over the pipes and screw onto the mixer.



### Step 10

Remove the plugs from base.

Push hot and cold pipes into holes, ensuring they are fully engaged within the hole and hot water pipe is closest to bath.

Screw down using the 4 bolts previously.

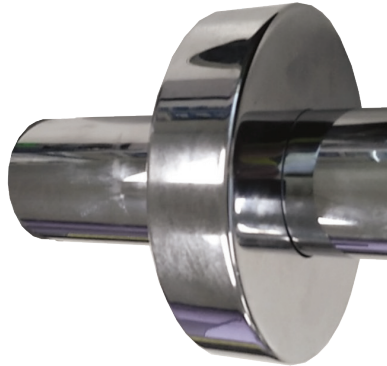
### Important!

Ensure hot and cold water pipes are inserted into the correct sides.



### Step 8

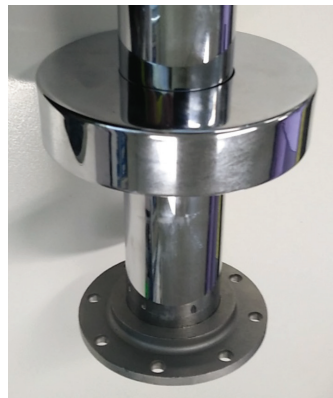
Slide cover flange onto end of mixer (as shown).



### Step 9

Ensuring the water is turned off at the mains, remove plug securing plate and fixing plate from the base.

Screw the securing plate to the bottom of the mixer pipe and tighten.



### Step 11

Slide cover flange over floor base to conceal.

