

Plaza mirror 850mm with LED edge lighting

PZ06247

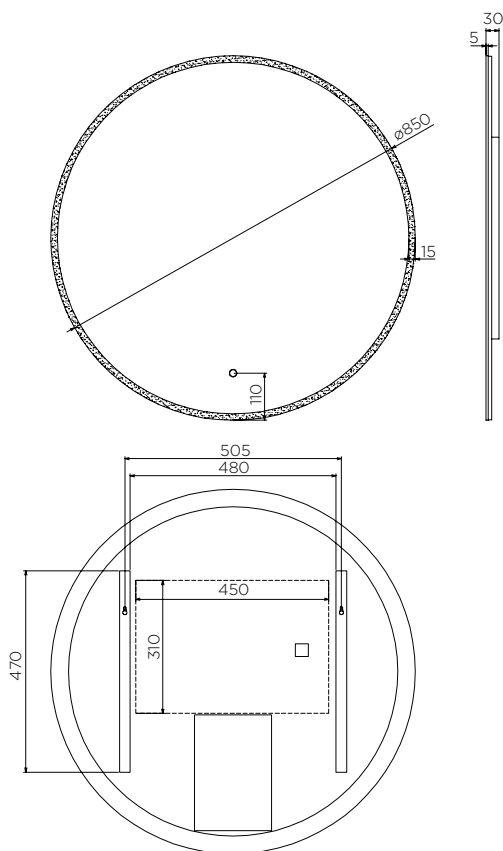
Electrical: 220-240V (hardwire) - IP44 rating

LED Lighting: Diffused backlight around the entire mirror. Hold button to adjust light intensity. Tap button twice for option of warm light, cool light or an in between light.

Demister: Yes

Touch Switch Operation: Yes

Connectivity: Blue tooth connectivity for optional speakers (AR06000)



The Plaza mirror is one of the new feature packed LED lit mirrors from Arcisan.

The edge lighting is lit using the latest LED technology for long life, low electricity usage and an even spread of light, unlike older fluorescent lit mirrors. The lights and demister are operated via the touch switch.

Size is Ø850mm.

WARRANTY
5 years

*Conditions apply.

streamline