

Eneo Wall mixer set - 150mm Spout

EN013210

WELS: 6 star

Litre/min: 4.5L

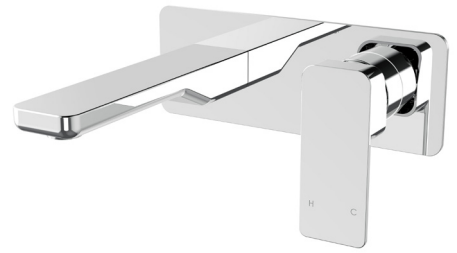
WELS License / Reg No: 1483 / T37519

Finishes available:



Chrome Brushed Nickel[^] (.SN) Matte Black (.MB) Brushed Gun Metal[^] (.GM) Brushed Brass[^] (.BB)

[^] PVD finish

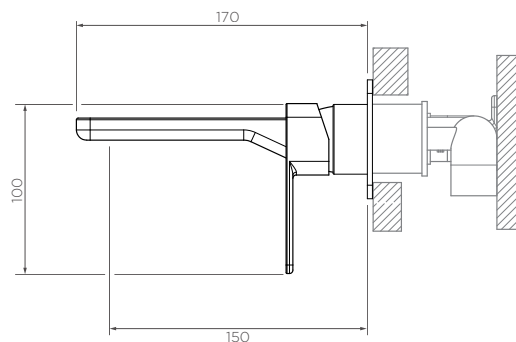
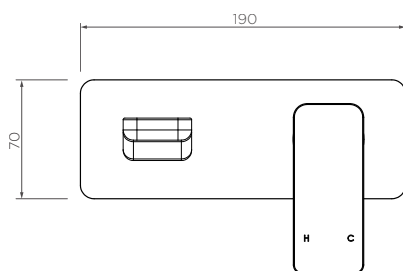


INFORMATION

Pressure Rating Hot and cold water inlet pressures
150 - 500kPa should be equal.

CARE AND MAINTENANCE

- All surfaces should be frequent cleaned with a mixture of mild, pH neutral soap and warm water with a soft cloth
- Do not use abrasive clothes, scouring pads on surfaces
- Do not use harsh cleaning agents i.e. cream cleaners or citrus based cleaners (*see cleaning leaflet for comprehensive list*)



WARRANTY
15 years

Requires ARB0120 - Arcisan Universal in-wall body for installation.

*Conditions apply.

streamline

Dimensions are in millimeters and are subject to manufacturing variations. Streamline Products reserves the right to vary specifications at any time without notice. Information provided within this specification sheet is correct at the date of printing. Please confirm all particulars with your sales consultant prior to purchase. Version: 1.0 - February 2021