

Axis Pin wall mount basin/bath mixer with plate - 150mm spout

AX16215 - EXTERNAL PART ONLY

WELS: 6 star

Litre/min: 4.5L

WELS License / Reg No: 1483 / T34785

Finishes available:



^ PVD finish



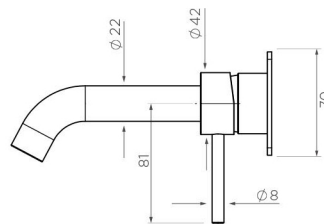
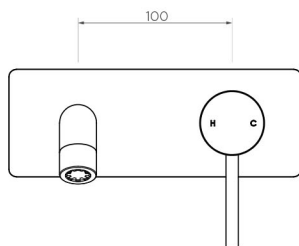
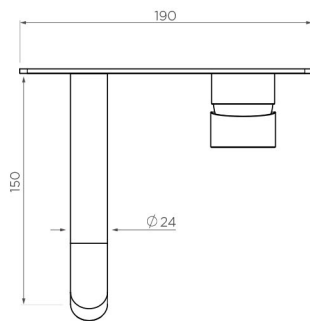
INFORMATION

Pressure Rating
150 - 500kPa

Hot and cold water inlet pressures
should be equal.

CARE AND MAINTENANCE

- All surfaces should be frequent cleaned with a mixture of mild, pH neutral soap and warm water with a soft cloth
- Do not use abrasive clothes, scouring pads on surfaces
- Do not use harsh cleaning agents i.e. cream cleaners or citrus based cleaners (*see cleaning leaflet for comprehensive list*)



Requires ARB0120 - Arcisan Universal in-wall body for installation.

WARRANTY
15 years

*Conditions apply.

streamline

www.streamlineproducts.com.au | Ph: 1300 735 352

Dimensions are in millimeters and are subject to manufacturing variations. Streamline Products reserves the right to vary specifications at any time without notice. Information provided within this specification sheet is correct at the date of printing. Please confirm all particulars with your sales consultant prior to purchase. Version: 1.0 - April 2023