

Xoni mirror cabinet 900 x 700

XN0593521.W

Electrical: 220-240V (hardwire) - IP44 rating

LED Lighting: Yes - edge lit

Demister: No

Touch Switch Operation: Yes - double click to change light colour (3000k, 4000k, 6000k). Click and hold to dim.

Powerpoint: Yes - x1 double inside

Magnification mirror: Yes - x3 inside

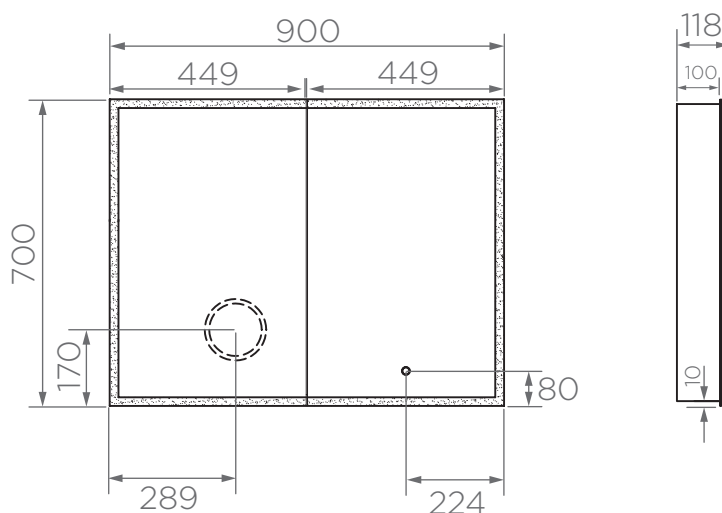


NOTES:

Cabinet frame is 10mm smaller than mirror doors.
Can be installed into the wall cavity.

CARE AND MAINTENANCE

- All surfaces should be frequent cleaned with a mixture of mild, pH neutral soap and warm water with a soft cloth
- Do not use abrasive clothes, scouring pads on surfaces



WARRANTY
5 years

*Conditions apply.

streamline

www.streamlineproducts.com.au | Ph: 1300 735 352

Dimensions are in millimeters and are subject to manufacturing variations.
Streamline Products reserves the right to vary specifications at any time without notice. Information provided within this specification sheet is correct at the date of printing. Please confirm all particulars with your sales consultant prior to purchase.
Version: 1.0 - January 2024