

Arcisan push operated pop-up bath waste with overflow

AR07412

Finishes available:



Chrome



Brushed Nickel[^]
(.SN)



Matte Black
(.MB)

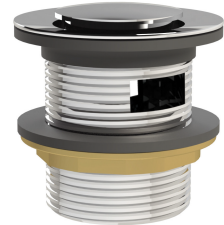


Gloss White
(.GW)



Matte White
(.MW)

[^] PVD finish



CARE AND MAINTENANCE

- All surfaces should be frequently cleaned with a mixture of mild, pH neutral soap and warm water with a soft cloth
- Do not use abrasive clothes, scouring pads on surfaces
- Do not use harsh cleaning agents i.e. cream cleaners or citrus based cleaners (*see cleaning leaflet for comprehensive list*)

