

Arcisan slimline in-wall cistern | mechanical

ARO4430

WELS: 4 stars

Litres/min: 3/4.5L

Pressure rating: 150 - 500kPa

Inlet position: Top left

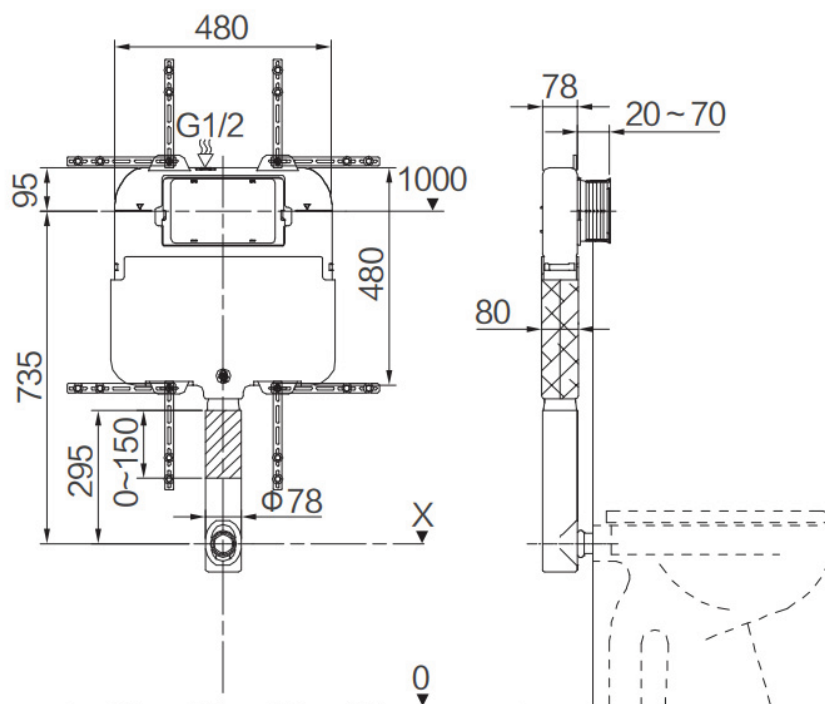
Material: High density polyethylene

INFORMATION

The slim concealed, dual flush cistern is made from high density polyethylene, incorporating inbuilt overflow. Due to its slim design, the cistern can be installed in a standard 90mm metal or timber stud wall application.

Hot and cold water inlet pressures should be equal.

What does mechanical mean? - this is standard fixing on front of cistern. The push plate mechanically pulls the levers up to open the outlet mechanism and flush the toilet.



WARRANTY
10 years

*Conditions apply.

stream|line

www.streamlineproducts.com.au | Ph: 1300 735 352

Dimensions are in millimeters and are subject to manufacturing variations. Streamline Products reserves the right to vary specifications at any time without notice. Information provided within this specification sheet is correct at the date of printing. Please confirm all particulars with your sales consultant prior to purchase. Version: 1.1 - August 2024