

## Arcisan slimline in-wall cistern | pneumatic

ARO4431

**WELS:** 4 stars

**Litres/min:** 3/4.5L

**Pressure rating:** 150 - 500kPa

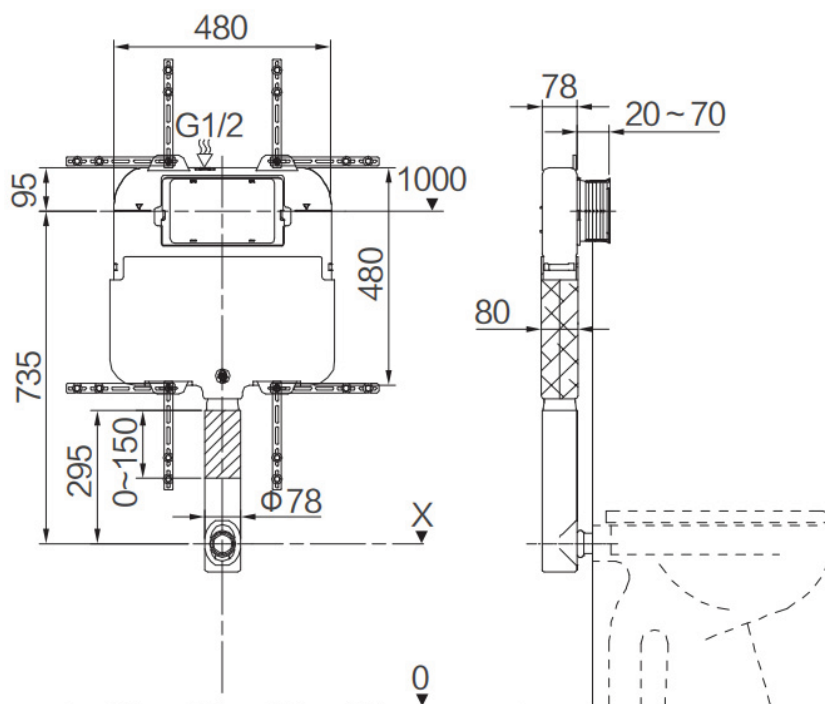
**Inlet position:** Top left

**Material:** High density polyethylene

### INFORMATION

The slim concealed, dual flush cistern is made from high density polyethylene, incorporating inbuilt overflow. Due to it's slim design, the cistern can be installed in a standard 90mm metal or timber stud wall application.

**What does pneumatic mean?** The plate will be mounted away from the cistern. The buttons on the push plate will push a valve that pushes air through a tube to where the cistern is and open the outlet valve to flush the toilet.



**WARRANTY**  
10 years

\*Conditions apply.

stream|line

www.streamlineproducts.com.au | Ph: 1300 735 352

Dimensions are in millimeters and are subject to manufacturing variations. Streamline Products reserves the right to vary specifications at any time without notice. Information provided within this specification sheet is correct at the date of printing. Please confirm all particulars with your sales consultant prior to purchase. Version: 1.1 - August 2024