

## Arcisan concealed in-wall cistern with frame

ARO4460

**WELS:** 4 stars

**Litres/min:** 3/4.5L

**Pressure rating:** 150 - 500kPa

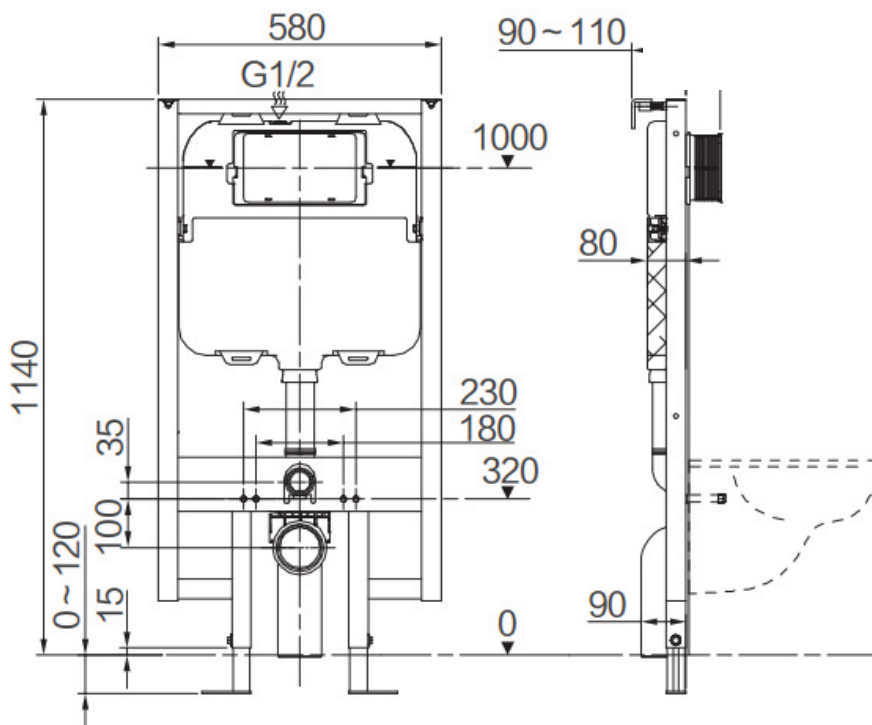
**Inlet position:** Top left

**Material:** High density polyethylene

### INFORMATION

In-wall cistern 80mm thick front access, mechanical operation with a metal frame.

Hot and cold water inlet pressures should be equal.



**WARRANTY**  
10 years

\*Conditions apply.

streamline

Dimensions are in millimeters and are subject to manufacturing variations. Streamline Products reserves the right to vary specifications at any time without notice. Information provided within this specification sheet is correct at the date of printing. Please confirm all particulars with your sales consultant prior to purchase. Version: 1.1 - August 2024