

Neion Plus wall hung intelligent toilet

NEO41325

Package comprised of: Neion Plus wall hung intelligent pan and Arcisan slim line concealed cistern.



Neion Plus wall hung intelligent pan
NEO43200



Arcisan concealed in-wall cistern with frame
AR04460

Neion Plus wall hung intelligent pan - remote control and heated seat

NEO43200

Power: 1250W

Rated voltage: AC220-240V, 50-60Hz

Water proof rating: IPX4

WELS: 4 stars

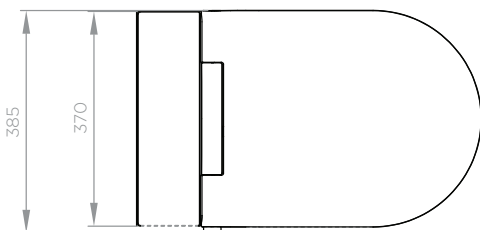
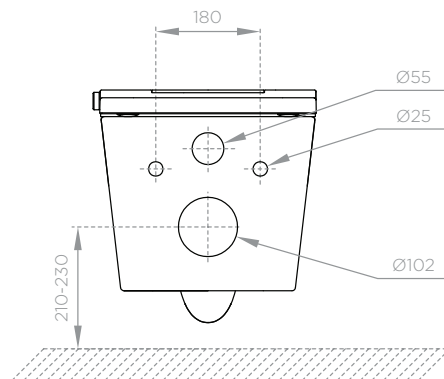
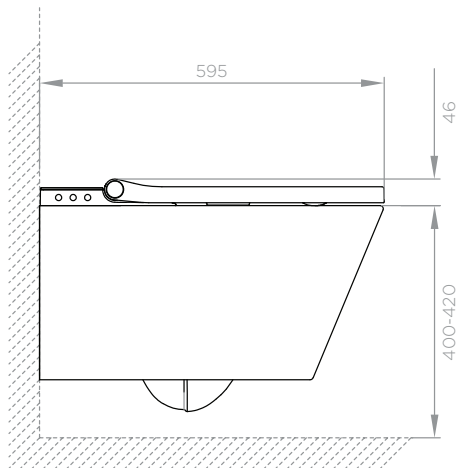
Flush Litre/min: 3/4.5L

Finish: White



INFORMATION

- Rear wash & female wash
- Night light
- Heated seat
- Adjustable nozzle position
- Adjustable water temperature and flow
- Nozzle disassembly and Antibacterial
- Instant warm water
- Drying function
- Pre-wetting of pan
- Self-cleaning nozzle
- Deodorization
- Remote control



Requires AR04460 - Arcisan in-wall concealed cistern with frame

WARRANTY
10 years

*Conditions apply.

streamline

www.streamlineproducts.com.au | Ph: 1300 735 352

Dimensions are in millimeters and are subject to manufacturing variations. Streamline Products reserves the right to vary specifications at any time without notice. Information provided within this specification sheet is correct at the date of printing. Please confirm all particulars with your sales consultant prior to purchase. Version: 1.2 - August 2024

Arcisan concealed in-wall cistern with frame

ARO4460

WELS: 4 stars

Litres/min: 3/4.5L

Pressure rating: 150 - 500kPa

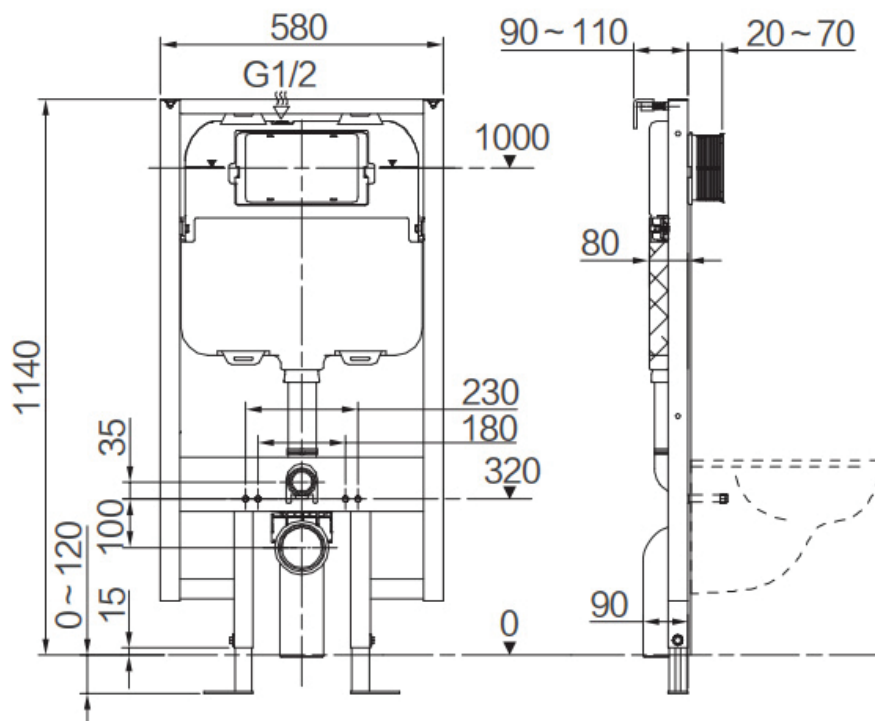
Inlet position: Top left

Material: High density polyethylene

INFORMATION

In-wall cistern 80mm thick front access, mechanical operation with a metal frame.

Hot and cold water inlet pressures should be equal.



WARRANTY
10 years

*Conditions apply.

streamline

www.streamlineproducts.com.au | Ph: 1300 735 352

Dimensions are in millimeters and are subject to manufacturing variations. Streamline Products reserves the right to vary specifications at any time without notice. Information provided within this specification sheet is correct at the date of printing. Please confirm all particulars with your sales consultant prior to purchase. Version: 1.1 - Sept 2024