

Synergii wall faced pan suite | Slim line seat

SY04190

Package comprised of: Synergii wall faced pan and Arcisan slim line concealed cistern.



Synergii wall faced pan | Slim line seat

SY04152



Arcisan slim line in-wall cistern | mechanical

AR04430

Synergii wall faced pan | Slim line seat

SY04152



WELS: 4 stars

Litre/min: 3/4.5L

WELS License / Reg No: 1483 / L04872

Set-out: P-trap 185mm
S-trap 75-90mm

Available colours: White

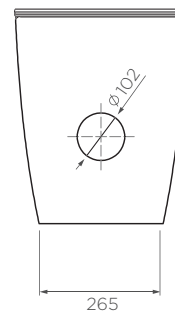
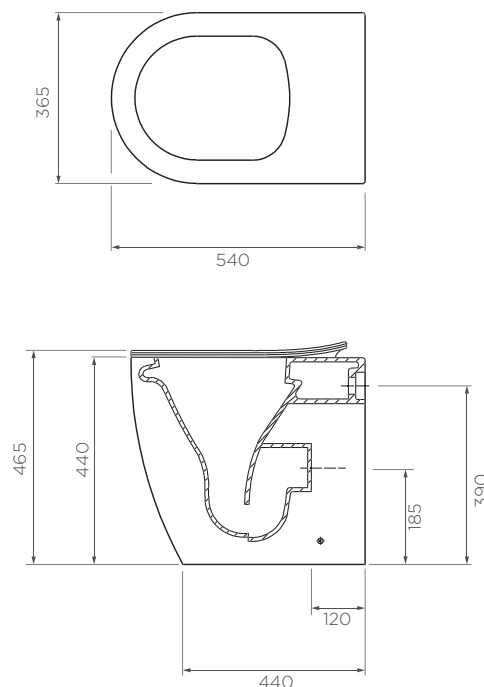


INFORMATION

The seat is made by Haro, and is a heavy grade, removable, Soft Close® Seat. It is made from Duraplas®, which is a material that is both very hygienic and UV stabilised.

CARE AND MAINTENANCE

- All surfaces should be frequent cleaned with a mixture of mild, pH neutral soap and warm water with a soft cloth
- Do not use abrasive clothes, scouring pads on surfaces
- Do not use harsh cleaning agents i.e. cream cleaners or citrus based cleaners (*see cleaning leaflet for comprehensive list*)



Requires AR04430: Arcisan in-wall cistern for installation.

WARRANTY
10 years

*Conditions apply.

streamline

Dimensions are in millimeters and are subject to manufacturing variations. Streamline Products reserves the right to vary specifications at any time without notice. Information provided within this specification sheet is correct at the date of printing. Please confirm all particulars with your sales consultant prior to purchase. Version: 1.1 - Sept 2024

Arcisan slim line in-wall cistern | mechanical

ARO4430

WELS: 4 stars

Litres/min: 3/4.5L

Pressure rating: 150 - 500kPa

Inlet Position: Top left

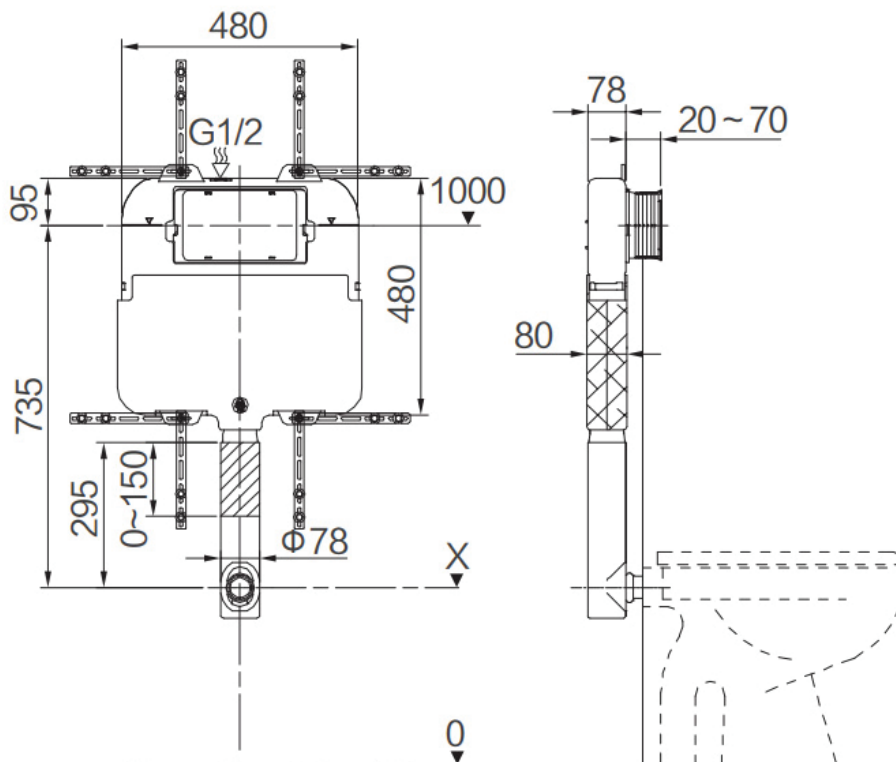
Material: High density polyethylene

INFORMATION

The slim concealed, dual flush cistern is made from high density polyethylene, incorporating inbuilt overflow. Due to it's slim design the cistern can be installed in a standard 90mm metal or timber wall application.

Hot and cold water inlet pressures should be equal.

What does mechanical mean? This is standard fixing on front of cistern. The push plate mechanically pulls the levers up to open the outlet mechanism and flush the toilet.



WARRANTY
10 years

*Conditions apply.

streamline

www.streamlineproducts.com.au | Ph: 1300 735 352

Dimensions are in millimeters and are subject to manufacturing variations. Streamline Products reserves the right to vary specifications at any time without notice. Information provided within this specification sheet is correct at the date of printing. Please confirm all particulars with your sales consultant prior to purchase. Version: 1.1 - Sept 2024