

Ethos wall faced pan suite | Soft close seat

ET24190

ET24190.B (black seat)

Package comprised of: Ethos wall faced pan and Arcisan slim line concealed cistern.



Ethos wall faced pan | Soft close seat

ET24150

ET24150.B (black seat)



Arcisan slim line in-wall cistern | mechanical

AR04430

Ethos wall faced pan | Soft close seat

ET24150

ET24150.B (black seat)



WELS: 3 stars

Litre/min: 3/6L

WELS License / Reg No: 1551 / L05082

Pressure rating: 150 - 500kPa

Set-out: P-trap 180mm

S-trap 100mm

Available colours:

- White with a white soft close seat
- White with a black soft close seat (ET24150.B)

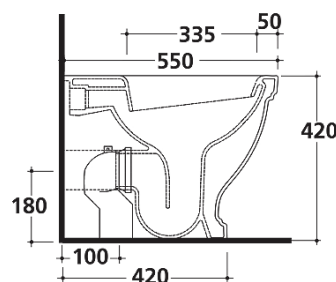
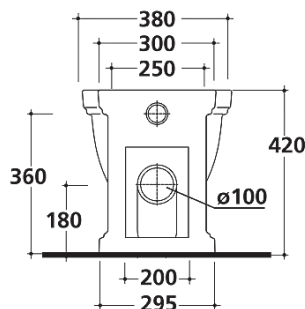
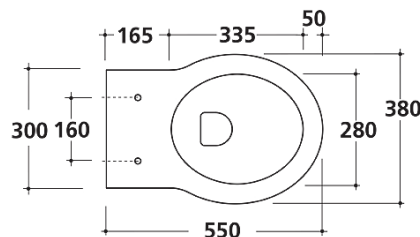


INFORMATION

Hot and cold water inlet pressures should be equal.

CARE AND MAINTENANCE

- All surfaces should be frequent cleaned with a mixture of mild, pH neutral soap and warm water with a soft cloth
- Do not use abrasive clothes, scouring pads on surfaces
- Do not use harsh cleaning agents i.e. cream cleaners or citrus based cleaners (*see cleaning leaflet for comprehensive list*)



WARRANTY
10 years

*Conditions apply.

Requires AR04430: Arcisan in-wall cistern for installation.

streamline

www.streamlineproducts.com.au | Ph: 1300 735 352

Dimensions are in millimeters and are subject to manufacturing variations. Streamline Products reserves the right to vary specifications at any time without notice. Information provided within this specification sheet is correct at the date of printing. Please confirm all particulars with your sales consultant prior to purchase. Version: 1.1 - Sept 2024

Arcisan slim line in-wall cistern | mechanical

ARO4430

WELS: 4 stars

Litres/min: 3/4.5L

Pressure rating: 150 - 500kPa

Inlet Position: Top left

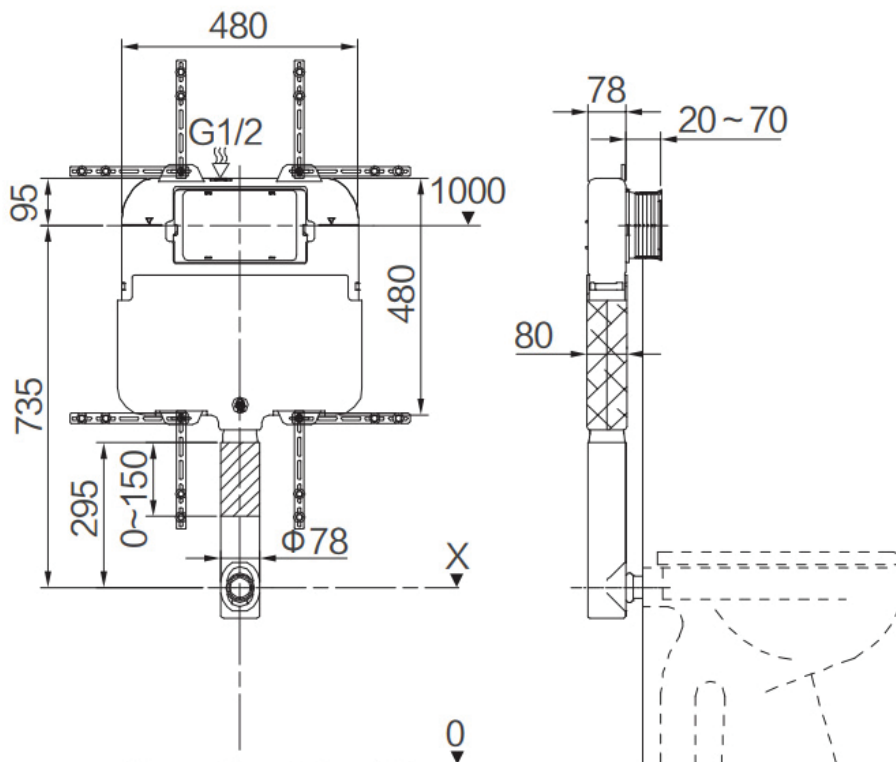
Material: High density polyethylene

INFORMATION

The slim concealed, dual flush cistern is made from high density polyethylene, incorporating inbuilt overflow. Due to its slim design, the cistern can be installed in a standard 90mm metal or timber stud wall application.

Hot and cold water inlet pressures should be equal.

What does mechanical mean? This is standard fixing on front of cistern. The push plate mechanically pulls the levers up to open the outlet mechanism and flush the toilet.



WARRANTY
10 years

*Conditions apply.

streamline

Dimensions are in millimeters and are subject to manufacturing variations. Streamline Products reserves the right to vary specifications at any time without notice. Information provided within this specification sheet is correct at the date of printing. Please confirm all particulars with your sales consultant prior to purchase. Version: 1.1 - Sept 2024