

Synergii wall hung pan suite | Wrap seat

SY04387

Package comprised of: Synergii wall hung pan and Arcisan concealed in-wall cistern with frame.



Synergii wall hung pan | Wrap seat

SY04341



Arcisan concealed in-wall cistern with frame

AR04460

Synergii wall hung pan | Wrap seat

SY04341



WELS: 4 stars

Litre/min: 3/4.5L

WELS License / Reg No: 1483 / L04871

Available colours: White



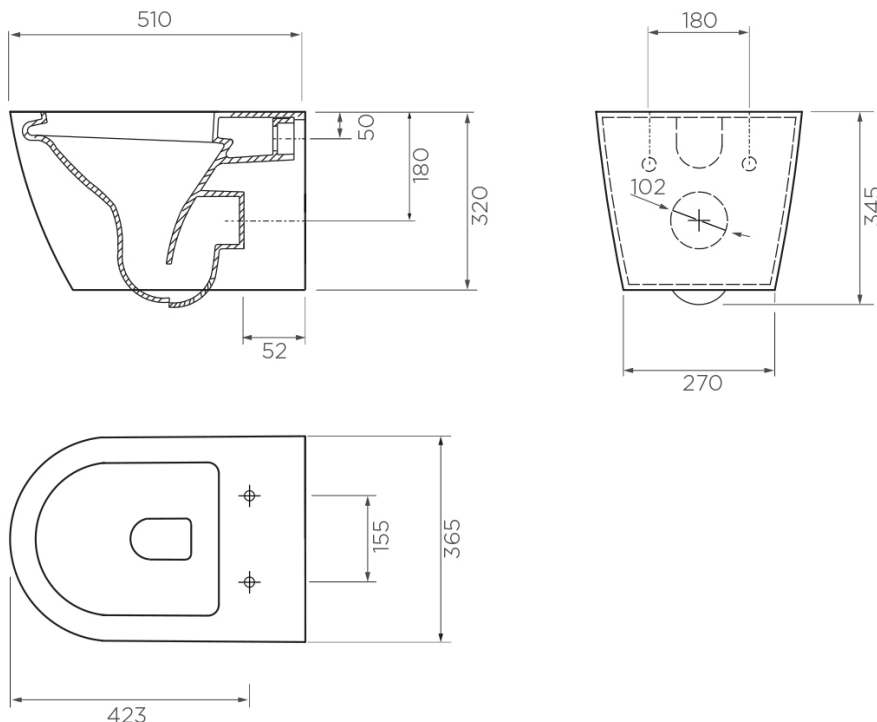
INFORMATION

The Synergii wall hung pan is stylish and functional. It has a rimless bowl eliminating the conventional box rim making this toilet very hygienic and easy cleaning. It's fitted with a soft close Haro seat, so one touch and it closes gently and quietly.

This pan features an easy clean coating on mixed in with the ceramic glaze.

CARE AND MAINTENANCE

- All surfaces should be frequent cleaned with a mixture of mild, pH neutral soap and warm water with a soft cloth
- Do not use abrasive clothes, scouring pads on surfaces
- Do not use harsh cleaning agents i.e. cream cleaners or citrus based cleaners (see cleaning leaflet for comprehensive list)



WARRANTY
10 years

*Conditions apply.

Requires AR04460: Arcisan in-wall cistern with frame for installation.

streamline

Dimensions are in millimeters and are subject to manufacturing variations. Streamline Products reserves the right to vary specifications at any time without notice. Information provided within this specification sheet is correct at the date of printing. Please confirm all particulars with your sales consultant prior to purchase. Version: 1.1 - Sept 2024

Arcisan concealed in-wall cistern with frame

ARO4460

WELS: 4 stars

Litres/min: 3/4.5L

Pressure rating: 150 - 500kPa

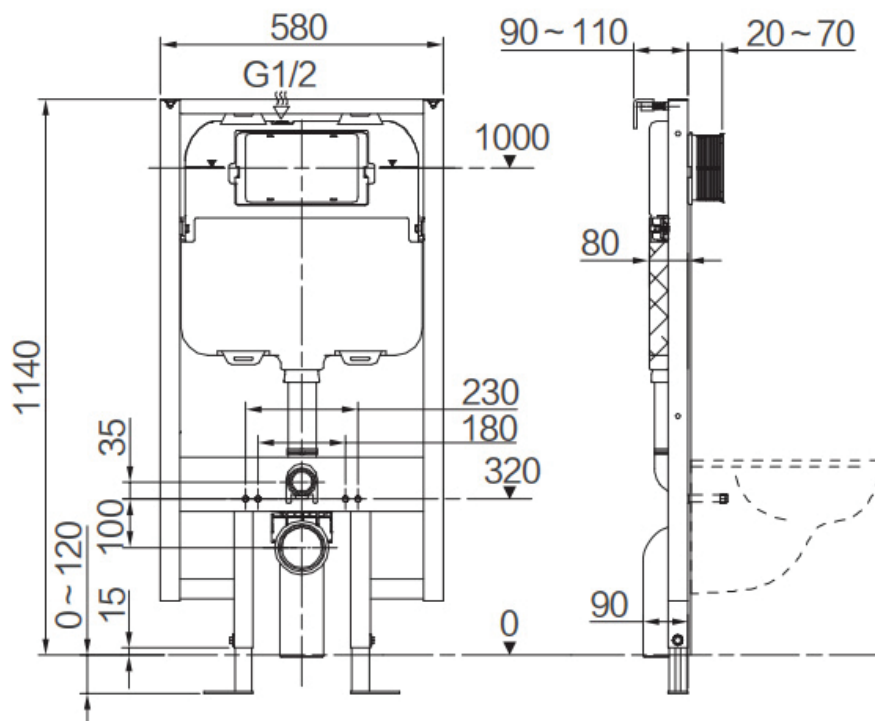
Inlet Position: Top left

Material: High density polyethylene

INFORMATION

In-wall cistern 80mm thick front access, mechanical operation with a metal frame.

Hot and cold water inlet pressures should be equal.



WARRANTY
10 years

*Conditions apply.

streamline

www.streamlineproducts.com.au | Ph: 1300 735 352

Dimensions are in millimeters and are subject to manufacturing variations. Streamline Products reserves the right to vary specifications at any time without notice. Information provided within this specification sheet is correct at the date of printing. Please confirm all particulars with your sales consultant prior to purchase. Version: 1.1 - Sept 2024